

GWC Italia

Proven technology
for individual valve solutions
worldwide



GWC Italia

Worldwide Network

ITALY GROUP HEADQUARTERS, PRODUCTION & SALES

GWC Italia, SpA
Via A. Grandi, 5
20056 Trezzo Sull'Adda
Milano, Italy
Phone: 39-02-86882941
Fax: 39-02-86882942
Email: sales@gwcitalia.com



USA HEADQUARTERS PRODUCTION & SALES

GWC USA, Inc.
8502 Crippen Street
Bakersfield, CA. 93313
ph: +1-661.834.1775
fax: +1-661.834.2072
Email: sales@gwcitalia-usa.com



SALES

GWC USA, Inc
24624 Interstate 45 N.
Spring, Texas 77386
Toll Free: +1.877.768.3760
ph: +1.281.719-1986
Email: sales@gwcitalia-usa.com



SALES

GWC Valve & Controls DMCC,
Dubai
1506, Platinum Tower
I-Cluster,
Jumeirah Lake Towers
Dubai UAE
ph: +971-44.539.358
Email: sales@gwcitalia.com



PRODUCTION & SALES

GWC Valve Manufacturing
(Shanghai) Co., Ltd.
No 3600 Jihe Rd,
Huaxin Town,
Qingpu, Shanghai 201708,
China
ph: +86-21.597.987.99
fax: +86-21.597.987.90
Email: sales@gwcitalia.com

GWC Italia SpA with its Headquarters in Milan, Italy designs, manufacturers and markets valves with one of the most extensive lines you will find in the Industry today. GWC Italia SpA which is founded by an Italian Group & USA Entrepreneurial Management team, has become the Parent Company of the long standing GWC Worldwide Companies. This Italian & USA team has a history of building and managing successful valve manufacturing companies over the past 40 years. The valves manufactured in Italy will be complementary to the existing GWC line consisting of diversified flow control packages in a variety of alloys, trims, configurations, sizes and pressure classes, from general to severe applications. GWC Valves are used in major applications for Upstream, Downstream & Transportation Segments of the Oil & Gas Industry, E&P, Petrochemical, Chemical, Mining/Minerals, Power, Marine and Industrial markets.

GWC Italia SpA extensive line of valve and flow control products include but not limited to:

- Trunnion Mounted Ball Valves (soft & metal seated)
 - Split Body
 - Top Entry
 - Welded Body
 - Subsea
 - Cryogenic & High Temperature
 - Two Balls One Body DBBV
- Pipeline Gate and Check Valves
- Floating Ball Valves
- Gate, Globe and Check Valves including Cast & Forged
- Butterfly Valves including Triple Offset, High Performance and Resilient Seated
- Dual Plate Check Valves
- Needle and Gauge Valves
- Wellhead Gate Valves

GWC Italia Spa products are designed, engineered and manufactured to exceed its customer's stringent process requirements including API 6D, API 6A, API 6DSS, API 600, API 602, API 608, ISO 9001, PED, ATEX, SIL 3 and TA – Luft.



**Proven technology
for individual valve solutions
worldwide**

CERTIFICATIONS & STANDARDS

American Standards

American Petroleum Institute

API-6D	Specification for Pipeline Valves
API-6D SS	Specification for Subsea Pipeline Valves
API-6A	Specification for Wellhead and Christmas Tree Equipment
API-6FA	Specification for Fire Test for Valves
API-594	Check Valves: Wafer, Wafer-Lug, and Double Flanged Type
API-598	Valve Inspection and Testing
API-600	Bolted Bonnet Steel Gate Valves for Petroleum and Natural Gas Industries
API-602	Compact Steel Gate Valves- Flanged, Threaded, Welding and Extended-Body Ends
API-607	Fire Test for Soft-Seated Quarter-Turn Valves
API-608	Metal Ball Valves - Flanged, Threaded, and Welding End
API-609	Butterfly Valves: Double Flanged, Lug and Wafer-Type
API-Q1	Specification for Quality Programs for the Petroleum, Petrochemical & Natural Gas

American Society of Mechanical Engineers

ASME-B1.20.1	Pipe Threads, General Purpose (inch)
ASME-B16.11	Forged Fittings, Socket-Welding and Threaded
ASME-B16.10	Face to Face and End to End Dimensions of Valves
ASME-B16.5	Pipe Flanges and Flanged Fittings NPS 1/2 ~ NPS 24
ASME-B16.47	Large Diameter Steel Flanges NPS 26 ~ NPS 60
ASME-B16.25	Buttwelding Ends
ASME-B16.34	Valves - Flanged, Threaded and Welding End

International Standards

ISO 9001:2008	Quality Management Systems
ISO 14001	Environmental Management
OHSAS 18001:2007	Occupational Health and Safety Management System
ISO/TS 29001	Petroleum, Petrochemical and Natural Gas Industries - Sector Specific Quality Management Systems
CE/PED	Pressure Equipment Directive
CU-TR	Technical Reglment Conformity Certificate TRCU
CRN	Canadian Registration Number
Z245.15.96	Pipeline Steel Valves
ATEX	European for explosive atmosphere
SIL3	Measurement of performance required for safety instrument function

Forged Body Trunnion Mounted Ball Valves Side Entry

GWC produces a full line of API-6D Trunnion Mounted Ball valves in both two/three Piece Forged. We offer a full range of materials in carbon, alloy and stainless steel from general to severe in application, including Sub Sea.



SIZE RANGE: 2" - 64"
PRESSURE CLASS: ASME 150 - 2500
API 2000 - 15000
API STANDARDS: 6D & 6A
API 6D SS
ASME B16.34

FEATURES

- ▶ 2-3 PIECE BODY
- ▶ FULL AND REDUCED BORE
- ▶ TRUNNION MOUNTED
- ▶ DOUBLE BLOCK AND BLEED
- ▶ ANTI-BLOW OUT STEM
- ▶ ANTI-STATIC DEVICE
- ▶ FIRESAFE TO API-607/6FA
- ▶ SPRING LOADED SEATS
- ▶ SEALANT INJECTION ON REQUEST
- ▶ NACE MR-01-75

Forged Trunnion Mounted Ball Valves Welded Body

GWC produces a full line of API-6D Trunnion Mounted Ball valves welded body design. In a full range of materials in carbon, alloy and stainless steel from general to severe in application, including Sub Sea.



SIZE RANGE: 2" - 64"
PRESSURE CLASS: ASME 150 - 1500
API STANDARDS: 6D
API 6D SS
ASME B16.34

FEATURES

- ▶ 1 PIECE BODY
- ▶ FULL AND REDUCED BORE
- ▶ TRUNNION MOUNTED
- ▶ DOUBLE BLOCK AND BLEED
- ▶ ANTI-BLOW OUT STEM
- ▶ ANTI-STATIC DEVICE
- ▶ FIRESAFE TO API-607/6FA
- ▶ SPRING LOADED SEATS
- ▶ SEALANT INJECTION
- ▶ NACE MR-01-75

One Piece Body Trunnion Mounted Ball Valves Top Entry

GWC full line of API-6D Trunnion Mounted Ball valves Top Entry one piece body design. We offer a full range of materials in carbon, alloy and stainless steel from general to severe in application. Including Sub Sea.



SIZE RANGE: 2" - 56"
PRESSURE CLASS: ASME 150 - 2500
API 5000-15000
API STANDARDS: 6D & 6A
ASME B16.34

FEATURES

- ▶ 1-PIECE BODY
- ▶ FULL AND REDUCED BORE
- ▶ TRUNNION MOUNTED
- ▶ DOUBLE BLOCK AND BLEED
- ▶ ANTI-BLOW OUT STEM
- ▶ ANTI-STATIC DEVICE
- ▶ FIRESAFE TO API-607/6FA
- ▶ SPRING LOADED SEATS
- ▶ SEALANT INJECTION ON REQUEST
- ▶ NACE MR-01-75

Two Balls One Body DBBV

Block & Bleed valves with two balls in one body to achieve a positive sealing in a compact design. We offer a full range of materials in carbon, alloy and stainless steel from general to severe applications.



SIZE RANGE: 1" - 36"
PRESSURE CLASS: ASME 150 - 2500
API STANDARD API 6D
ASME B16.34

FEATURES

- ▶ 1-3 PIECE BODY
- ▶ FULL AND REDUCED BORE
- ▶ TRUNNION MOUNTED
- ▶ DOUBLE BLOCK AND BLEED
- ▶ ANTI-BLOW OUT STEM
- ▶ ANTI-STATIC DEVICE
- ▶ FIRESAFE TO API-607/6FA
- ▶ SPRING LOADED SEATS
- ▶ SEALANT INJECTION ON REQUEST
- ▶ NACE MR-01-75

Cryogenic Trunnion Mounted Ball Valves

GWC offers Cryogenic Trunnion Mounted Ball valves to service at temperatures down to minus 196°C.



SIZE RANGE: 2" - 56"
PRESSURE CLASS: ASME 150 - 2500
API STANDARDS: 6D
ASME B16.34

FEATURES

- ▶ FULL AND REDUCED BORE
- ▶ 2-3 PIECE BODY
- ▶ ANTI-BLOW OUT STEM
- ▶ ANTI-STATIC DEVICE
- ▶ FIRESAFE TO API-607/6FA
- ▶ ZERO EMISSIONS FROM STEM
- ▶ NACE MR-01-75

Cast Body Trunnion Mounted Ball Valves

GWC also produces a full line of API-6D Trunnion Mounted Ball valves in Two-Piece Cast Design. With a full range of materials in cast carbon, alloy and stainless steel.



SIZE RANGE: 2" - 24"
PRESSURE CLASS: ASME 150 - 600
API STANDARDS: 6D
ASME B16.34

FEATURES

- ▶ 2-PIECE BODY
- ▶ FULL AND REDUCED BORE
- ▶ TRUNNION MOUNTED
- ▶ DOUBLE BLOCK AND BLEED
- ▶ ANTI-BLOW OUT STEM
- ▶ ANTI-STATIC DEVICE
- ▶ FIRESAFE TO API-607/6FA
- ▶ SPRING LOADED SEATS
- ▶ SEALANT INJECTION
- ▶ NACE MR-01-75

Flanged Unibody Ball Valves

The GWC unibody ball valves are designed, constructed, and tested according to API and ASME/ANSI Standards. Other international standards including BS and Din are also available on request.



SIZE RANGE: 2" - 10"
PRESSURE CLASS: ASME 150 - 600
API STANDARDS: 6D & 608
ASME B16.34

FEATURES

- ▶ REDUCED BORE
- ▶ 2-PIECE BODY
- ▶ ANTI-BLOW OUT STEM
- ▶ ANTI-STATIC DEVICE
- ▶ FIRESAFE TO API-607/6FA
- ▶ ZERO EMISSIONS FROM STEM
- ▶ NACE MR-01-75

Flanged Split Body Ball Valves

The GWC split body ball valves are designed, constructed, and tested according to API and ASME/ANSI Standards. Other international standards including BS and Din are also available on request.



SIZE RANGE: 1/2" - 8"
PRESSURE CLASS: ASME 150 - 600
API STANDARDS: 6D & 608
ASME B16.34

FEATURES

- ▶ FULL BORE AND REDUCED BORE
- ▶ 2-PIECE BODY
- ▶ ANTI-BLOW OUT STEM
- ▶ ANTI-STATIC DEVICE
- ▶ FIRESAFE TO API-607/6FA
- ▶ ZERO EMISSIONS FROM STEM
- ▶ NACE MR-01-75

Threaded & Socket-Weld Floating Ball Valves

GWC small floating valves are available in high pressure up to 6000 psi as well as general use commodity application.



SIZE RANGE: 1/4" - 3"
PRESSURE CLASS: ASME 800 - 1500
PRESSURE RANGE: 800 - 6,000 WOG

FEATURES

- ▶ 1, 2 & 3 PIECE BODY
- ▶ FULL AND REDUCED BORE
- ▶ ANTI-BLOW OUT STEM
- ▶ ANTI-STATIC DEVICE
- ▶ AVAILABLE FIRESAFE TO API-607
- ▶ NACE MR-01-75

API 6D through Conduit Slab & Parallel Expanding Gate Valve

GWC produces a full line of API-6D Through Conduit Gate valves in both slab and expanding gate design. We offer a full range of materials and classes from standard to high and low temperature service based on customer requirements for performance in critical and primary isolation, bubble tight shutoff in liquid pipeline applications



SIZE RANGE: 2" - 36"
PRESSURE CLASS: ASME 150 - 2500
API STANDARDS: 6D
ASME B16.34

FEATURES

- ▶ FULL BORE PORT FOR PIGGING AND REDUCED PRESSURE DROP
- ▶ FULL PROTECTED SEAT SEALING FACES
- ▶ DOUBLE BLOCK AND BLEED CAPABILITY
- ▶ TIGHT MECHANICAL SEAL FOR HIGH / LOW PRESSURE
- ▶ INTERNAL CAVITY PRESSURE RELIEF
- ▶ SEALANT INJECTORS FOR SEATS AND STEM

API 6D Swing Check Valves

GWC produces a full line of API 6D Full Opening Swing Check Valves in both carbon steel and low temp materials as well as full stainless steel as required.



SIZE RANGE: 2" - 36"
PRESSURE CLASS: ASME 150 - 2500
API STANDARDS: 6D
ASME B16.34

FEATURES

- ▶ FULL OPEN PIGGABLE DESIGN
- ▶ CAST CARBON STEEL BODY
- ▶ 316 STAINLESS STEEL TRIM STANDARD
- ▶ BOLTED TOP ENTRY WITH 1/2" NPT BLEED PLUG ON COVER
- ▶ 90 DUROMETER ORING SEAL IN CLAPPER
- ▶ BUBBLE TIGHT SHUTOFF
- ▶ IN-LINE REPAIRABLE
- ▶ SUITABLE FOR VERTICAL OR HORIZONTAL INSTALLATION
- ▶ NACE MR0175

Oilfield Floating Ball Valves

GWC Oilfield Ball Valves are available in low and high pressure up to 5000 psi



SIZE RANGE: 1" - 4"
PRESSURE CLASS: ASME 750 - 5000

FEATURES

- ▶ 2 PC THREADED OR BOLTED CONSTRUCTION
- ▶ FULL AND REDUCED BORE
- ▶ ANTI-BLOW OUT STEM WITH GREASE FITTING
- ▶ ANTI-STATIC DEVICE
- ▶ FIRESAFE DESIGN
- ▶ HEAVY DUTY LOCKING HANDLE
- ▶ NACE MR-01-75

Cast Steel Valves Gate, Globe & Check

GWC produces a wide variety of Cast Steel Gate, Globe, and Check valves. Other available designs include cast steel angle valves, O-ring seal block and bleed gate valves and cryogenic valves.



SIZE RANGE: 2" - 60"
PRESSURE CLASS: ASME 150 - 1500
API STANDARDS: 600 & 603
ASME B16.34

FEATURES

- ▶ FLANGED, RF, RTJ, BW ENDS
- ▶ WELDED IN SEAT RINGS
- ▶ LOW EMISSIONS PACKING
- ▶ SINGLE PIECE STEM DESIGN
- ▶ SOLID FLEXIBLE WEDGE

Pressure Seal Valves Gate, Globe & Check

GWC produces a wide variety of Cast Steel Pressure Seal Gate, Globe and Check valves. Other available pressure seal designs include Tilting Disc, Piston Type and Stop Check valves.



SIZE RANGE: 2" - 24"
PRESSURE CLASS: ASME 600 - 2500
API STANDARDS: 600
ASME B16.34

FEATURES

- ▶ FLANGED, RF, RTJ, BW ENDS
- ▶ WELDED IN SEAT RINGS
- ▶ LOW EMISSIONS PACKING
- ▶ SINGLE PIECE STEM DESIGN
- ▶ SOLID FLEXIBLE WEDGE

Forged Steel Valves Gate, Globe & Check

GWC produces a wide variety of Forged Steel Gate, Globe, and Check valves. Other available designs include y-pattern globe and check valves and cryogenic valves.



SIZE RANGE: 1/4" - 3"
PRESSURE CLASS: ASME 150 - 2500
API STANDARD: 602
ASME B16.34

FEATURES

- ▶ FNPT, SW, FLANGED RF, RTJ, BW ENDS
- ▶ LOW EMISSIONS PACKING
- ▶ SINGLE PIECE STEM DESIGN
- ▶ SOLID WEDGE

Triple Offset Butterfly Valves

GWC line of Triple Offset Butterfly valves are available in a wide range of pressure class, materials and body configurations.

This product is designed for Bi-directional Bubble Tight Shutoff being fully engineered and manufactured to exceed our clients stringent process requirements.



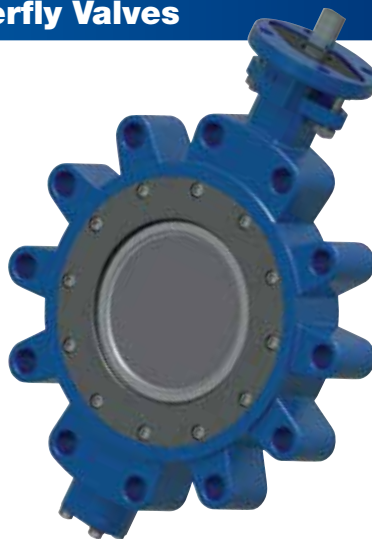
SIZE RANGE: 2" - 30"
PRESSURE CLASS: ASME 150 - 600
API STANDARDS: 609

FEATURES

- ▶ TRIPLE ECCENTRIC DISC-SHAFT
- ▶ ANTI-BLOW OUT STEM
- ▶ BI-DIRECTIONAL
- ▶ FIRESAFE DESIGN
- ▶ LOW FRICTION BODY SEAT
- ▶ ZERO LEAKAGE
- ▶ WAFER, LUG & FLANGE TYPE

High Performance Butterfly Valves

GWC Double Offset High Performance Butterfly valves are designed for shutoff and throttling control of liquids and gas. We offer a full range of materials to suit your specific applications.



SIZE RANGE: 2" - 48"
PRESSURE CLASS: ASME 150 - 600
API STANDARDS: 609

FEATURES

- ▶ DOUBLE ECCENTRIC DISC-SHAFT
- ▶ ANTI-BLOW OUT STEM
- ▶ BI-DIRECTIONAL
- ▶ FIRESAFE DESIGN AVAILABLE
- ▶ LOW FRICTION BODY SEAT
- ▶ ZERO LEAKAGE WITH SOFT SEAT
- ▶ WAFER, LUG & FLANGE TYPE

Resilient Seated Butterfly Valves

GWC offers a full line of Resilient Seated Butterfly Valves designed for Oil & Gas, HVAC and Industrial applications. This product is economically priced for on/off and throttling services.



SIZE RANGE: 2" - 48"
PRESSURE CLASS: ASME 125 - 150
API STANDARDS: 609

FEATURES

- ▶ SINGLE ECCENTRIC DISC-SHAFT
- ▶ ANTI-BLOW OUT STEM
- ▶ BI-DIRECTIONAL
- ▶ ZERO LEAKAGE
- ▶ WAFER, LUG & FLANGE TYPE

Dual Plate Check Valves

GWC'S retainerless design dual plate check valves are available for a broad range of applications.



SIZE RANGE: 2" - 60"
PRESSURE CLASS: ASME 150 - 2500
API STANDARDS: 594, 6D & 6A
ASME B16.34

FEATURES

- ▶ WAFER, LUG & FLANGE TYPE
- ▶ RETAINERLESS DESIGN
- ▶ LOW CRACKING PRESSURE
- ▶ NON SLAMMING
- ▶ FIRESAFE BY DESIGN

Needle & Gauge Valves

GWC needle and gauge valves are designed and produced for accurate regulation at pressure up to 10,000 psi.



SIZE RANGE : 1/4" - 1"
PRESSURE RANGE: 6,000 - 10,000 WOG

FEATURES

- ▶ HEAVY DUTY BODY
- ▶ METAL TO METAL BACK SEAT
- ▶ O-RING STEM SEAL
- ▶ THREADED BONNET CONNECTION
- ▶ NACE MR-01-75

Wellhead API 6A Gate Valve

GWC produces a full line of API-6A Gate valves in both expanding and slab gate design. We offer a full range of materials and classes from general to sour service based on customer requirements for wellhead, manifold and fracture applications.

SIZE RANGE: 1 13/16" - 7 1/16"
API: 2,000 - 15,000 PSI
API STANDARDS: 6A
MATERIAL CLASS: AA - FF

FEATURES

- ▶ CAST BODY 2,000- 5,000 PSI
- ▶ FORGED BODY 2,000- 15,000 PSI
- ▶ EXPANDING OR SLAB GATE
- ▶ RTJ OR THREADED ENDS



CATALOG	VALVE TYPE	DESIGN CODE	VALVE SIZE	PRESSURE CLASS	MATERIAL DESCRIPTION	
TBV-1002	Trunnion Mounted Ball Valves	API 6D, API 6A & ASME B16.34	2" TO 64"	ASME 150 TO ASME 2500, API 6A 3000/15000	A105N, A216 WCB, A352 LCC, A350 LF2,A352 LCB, A351 CF8, A351 CF8M, A182 F304, A182,F304L, A182 F316, A182 F316L, A351 CF3, A351,CF3M,A351 CN-7M, A182 F51, A182 F53, A182 F55,A890-6A, A890- 5A, A890- 4A	
FBV-1002	Flanged Floating Ball Valves	API 6D, API 608 & ASME B16.34	1/2" TO 10"	ASME 150 TO ASME 600	A216 WCB, A352 LCB, A352 LCC, A351 CF3,A351 CF3M, A351 CN-7M, A351 CF8,A351 CF8M, A890-6A, A890- 5A, A890- 4A ,B148	
SBV-1002	Floating Ball Valves, Threaded & Socket Weld	ASME B16.34	1/2" TO 2"	ASME 800 & 1500	A105N, A182 F316	
	Floating Ball Valves, Threaded	ASME B16.34	1/4" TO 3"	1000WOG TO 6000WOG	A216 WCB, A351 CF8M, AISI 1018	
	Floating Ball Valves, Threaded & Socket Weld	ASME B16.34	2-1/2" TO 3"	800WOG	A216 WCB, A351 CF8M	
PGV-1002	Through Conduit Slab & Expanding Gate Valves	API 6D	2"-36"	ASME 150 TO ASME 2500	A216 WCB, A216WCC, A352 LCB, A352 LCC	
SC-1002	Full Opening Swing Check Valves	API 6D	2" TO 36"	ASME 150 TO ASME 2500	A216 WCB, A352 LCC, A351 CF8M	
OBV-1001	Oilfield Ball Valve	ASME B 16.34	1" TO 4"	750WOG TO 5000WOG	A105N, A216 WCB, A352 LCC, A350, LF2, ASTM A395	
CSV-1004	Cast Steel Gate Valves	API 600, API 603 & ASME B 16.34	2" TO 60"	ASME 150 TO ASME 1500	A216 WCB, A216 WCC, A352 LCC, A352 LCB, A217,WC1, A217 WC6, A217 WC9, A217 C5, A217 C12,CF8C, A351 CN-7M, ,A351 CF8, A351 CF8M, A351 CF3, A351 CF3M, A351,A890-6A, A890- 5A, A890- 4A	
	Cast Steel Globe Valves & Angle Globe Valves	API 600, API 603 & ASME B 16.34	1-1/2" TO 20"			
	Cast Steel Swing Check Valves	API 600, API 603 & ASME B 16.34	2" TO 48"			
	O-Ring Seal Block & Bleed Gate Valves	API 600, API 603 & ASME B 16.34	2" TO 24"	ASME 150 TO ASME 300		A 216 WCB
	Cast Steel Cryogenic Gate,Globe & Check Valves	API 600, API 603 & ASME B 16.34	2" TO 24"	ASME 150 TO ASME 600		A351 CF8, A351 CF8M
PS-1002	Pressure Seal Gate Valves	API 600& ASME B 16.34	2" TO 24"	ASME 600 TO ASME 2500	A216 WCB, A216 WCC, A352 LCC, A352 LCB, A217, A351 CF8, A351 CF8M, A351 CF3, A351 CF3M, A351 WC1, A217 WC6, A217 WC9, A217 C5, A217 C12, CF8C, A351 CN-7M, A890-6A, A890- 5A, A890- 4A	
	Pressure Seal Globe Valves	ASME B16.34	2" TO 24"	ASME 600 TO ASME 2500		
	Pressure Seal Check Valves	ASME B16.34	2" TO 24"	ASME 600 TO ASME 2500		
FSV-1005	Forged Steel Gate Valves	API 602 & ASME B16.34	1/4" TO 2"	ASME 150 TO ASME 1500 & CLASS 800	A105N, A350 LF2, A182 F11, A182 F22, A182 F5, A182 F9,A182 F91, A182 F91A182 F304, A182 F304L, A182, F304L,A182 F316,A 182 F 316 L ,A182 F347 ,B148 , B 462,ALLOY 20, A182 F51, A182 F53, A182 F55	
	Forged Steel Globe Valves	ASME B16.34	1/4" TO 2"			
	Forged Steel Check Valves, Swing, Piston & Ball	ASME B16.34	1/4" TO 2"			
TOB-1003	Triple Offset Butterfly Valves	API 609 & ASME B16.34	3" TO 24" 3" TO 12"	ASME 150 & ASME 300 ASME 600	A216 WCB, A217 WC9, A351 CF8M, B148	
HPB-1003	High Performance Butterfly Valves	API 609 & ASME B16.34	2" TO 100" 2" TO 40" 3" TO 24"	ASME 150 ASME 300 ASME 600	A216 WCB, A351 CF8, A351 CF8M, B148	
RSB-1002	Resilient Seated Butterfly Valves	API 609 & ASME B16.34	2" TO 40"	ASME 150	A216 WCB, A351 CF8, A351 CF8M, B148	
	Resilient Seated Butterfly Valves	API 609 & MSS SP67	2" TO 40"	ASME 125	A126 CL B, A395	
WC-1002	Dual Plate Check Valves	API 594, API 6D, API 6A & ASME B16.34	2" TO 60"	ASME 150 & ASME 300	A216 WCB, A216 WCC, A352 LCC, A352 LCB, A217 , WC1, A217 WC6, A217 WC9, A217 C5, A217 C12, A351 CF8, A351 CF8M, A351 CF3, A351 CF3M, A351, CF8C, A351 CN-7M,A351 CG8M, B148 /A105, A350 LF2, A182 F316	
			2" TO 48"	ASME 600		
			2" TO 36"	ASME 900		
			2" TO 24"	ASME 1500		
			2" TO 12"	ASME 2500		
WGV-1002	Gate Valves	API 6A	1-3/16" TO 20-3/4"	API 3000, 5000 & 10000	AA, BB, CC, DD, EE, FF, GG, HH	
NGV-1002	Needle Valves	ASME B16.34	1/4" TO 1" 1/4" TO 1/2"	6000WOG & 10,000WOG	A105, A351 CF8M, AISI 12L14	
	Gauge Valves	ASME B16.34	1/2"	6000WOG		



**WORLDWIDE
HEADQUARTERS
GWC Italia SpA**

Via A. Grandi, 5
20056 Trezzo Sull'Adda
Milano, Italy
ph: 39-02-86882941
fax: 39-02-86882942

**USA HEADQUARTERS
GWC USA, Inc.**

4301 Yeager Way
Bakersfield,
California 93313 - USA
ph: 661-834-1775
fax: 661-834-2072

www.gwcitalia.com